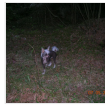


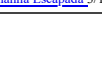


Tournais Angels Kissing Spring



 <p>DKCH FINCH NUCH NORDCH INTCH(FCI) FECH SECH Lohamas Hot Shot Panda Boy S 10295/2003 11/10/2002</p>	 <p>Lohamas Guldnougat S57009/01 9/29/2001</p>	 <p>GBCH SECH Omegsville Database 0989CJ 4/14/1998</p>	 <p>GBCH Zucci Definatly Desirable KCSB613CI 8/17/1994</p>
 <p>Tajian Dreamer Polly Pocket S12550/2006 1/20/2005</p>	 <p>Lohamas Emelie Lakritzola 0000 9/27/2000</p>	 <p>DKCH NUCH NORDCH INTCH(FCI) SECH Lohamas Crepe Suzette S15114/98 12/26/1998</p>	 <p>Jokima Just Fatal KCSB3201CG 3/13/1996</p>
 <p>Angel Dust de GabriTho OHZB : CHNH 83 11/15/2002</p>	 <p>DCH(Club) LVCH LUXCH NUICH VDHCH INTCH(FCI) CERCH The Natural N'Co 9/18/2002</p>	 <p>DKCH NUCH NORDCH INTCH SECH Prefix Wing Commander S35339/97 5/2/1997</p>	 <p>Goldenberry Casanova 11/11/1997</p>
		 <p>SECH Lohamas Bisquite 7/1/1998</p>	 <p>NORDCH INTCH(FCI) Prefix Roberta S16179/96 1/1/1996</p>
		 <p>AMCH Glebeath The Guvnor 0000 5/5/2000</p>	 <p>DKCH FINCH NORDCH SECH Prefix Willy With The Wig S42944/95 5/25/1995</p>
		 <p>AMCH It's All Or Nothing N'Co AKC TP01592302 4/10/2000</p>	 <p>Prefix Miss Money Penny S15392/95 12/20/1994</p>
		 <p>CZCH NLCH RKFCH RUSCH SKCH ESCH SLOCH INTCH(FCI) Sampan Basta 12.09.2000 - 21.02.2015 RKF.1133081 9/12/2000</p>	 <p>Zazza Paa Dou's Rocko Barocko S39481/97 7/1/1997</p>
		 <p>RKFCH Zholesk Selin Kljo 12/27/1999</p>	 <p>Lohamas Amorella Karamella S59130/95 11/10/1995</p>
			 <p>GBCH Glebeath The Gentleman JW KCSB0289CH 5/3/1996</p>
			 <p>Blandora Light My Fire Glebeath 3/10/1999</p>
			 <p>AMCH Blandora Without A Doubt TN83002501 7/14/1998</p>
			 <p>AMCH I Am All That And More N'Co TN 78140803 10/17/1998</p>
			 <p>RKFCH RUSCH AMCH PLCH INTCH(FCI) Guegry's Krimson n'Claver PKR.IX-39652 8/11/1994</p>
			 <p>PLCH Sasquehanna Czarnuszka PKR.IX-35729 4/18/1994</p>
			 <p>RUSCH MOLCH INTCH(FCI) Sasquehanna Witez 6/21/1998</p>
			 <p>RKFCH ROMCH RUSCH INTCH(FCI) Sasquehanna Escapada 3/13/1997</p>